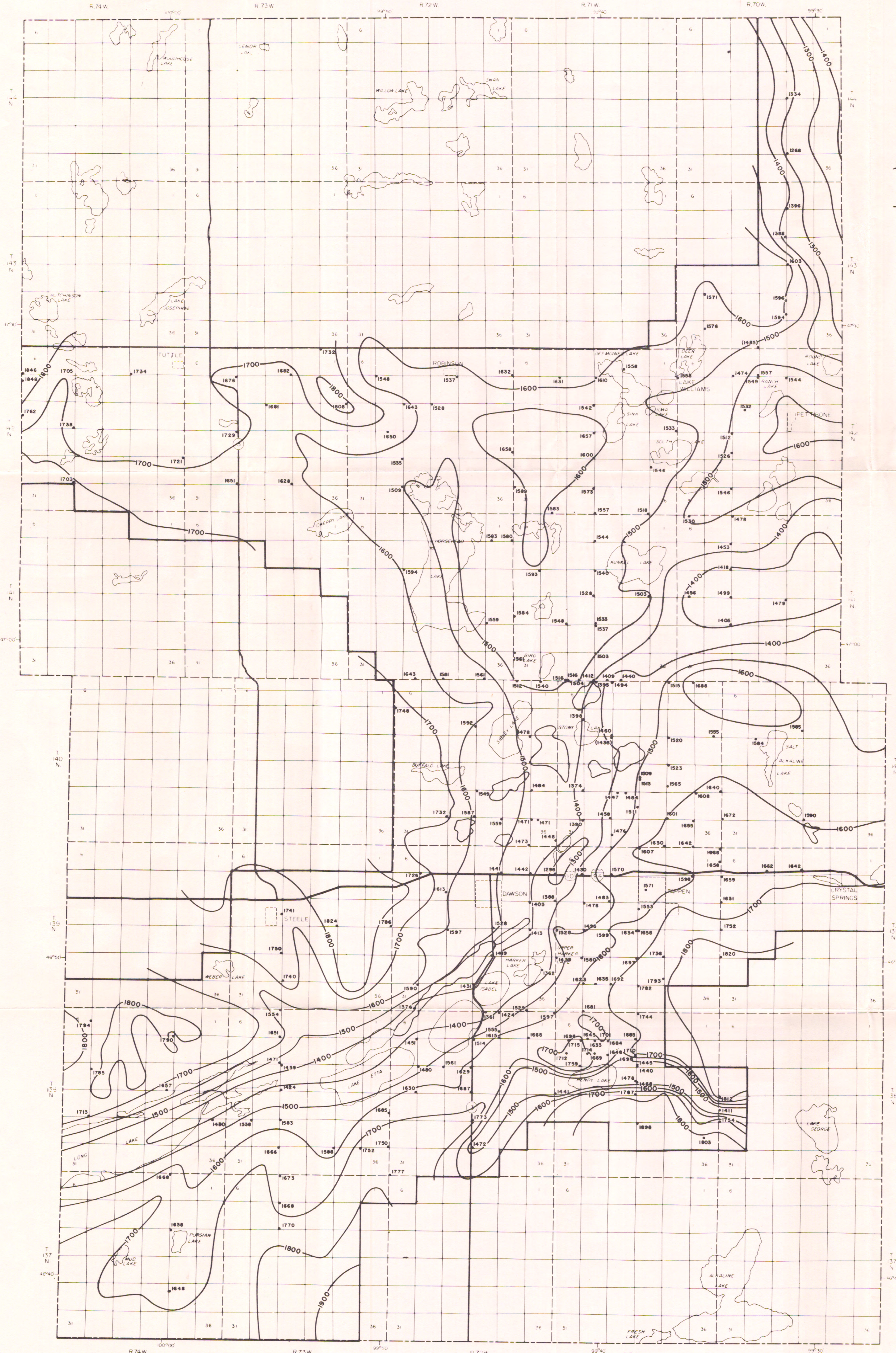


PREPARED BY THE NORTH DAKOTA STATE WATER COMMISSION

EXPLANATION

- 1528 Control Point—Number is altitude of the bedrock surface in feet above National Geodetic Vertical Datum of 1929
- (1485) Control Point—Test hole was not drilled into bedrock; number is the altitude of the bottom of the test hole in feet above NGVD of 1929
- 1600 Bedrock Surface Contour—Shows the altitude and configuration of the bedrock surface; Contour Interval is 100 feet; National Geodetic Vertical Datum of 1929
- ▭ Outline of Study Area



BASE PREPARED FROM NORTH DAKOTA STATE HIGHWAY DEPARTMENT COUNTY HIGHWAY MAP

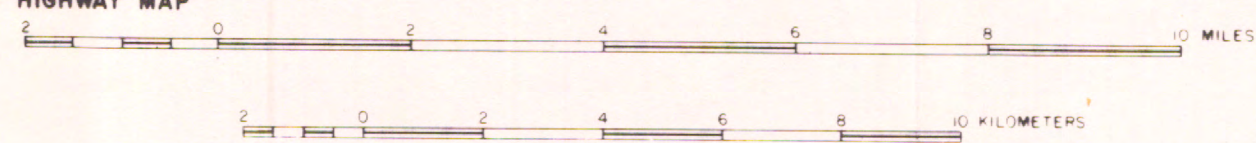


PLATE 7. BEDROCK TOPOGRAPHY MAP OF KIDDER COUNTY, NORTH DAKOTA